



JEAN ROUSSEAU
Paris

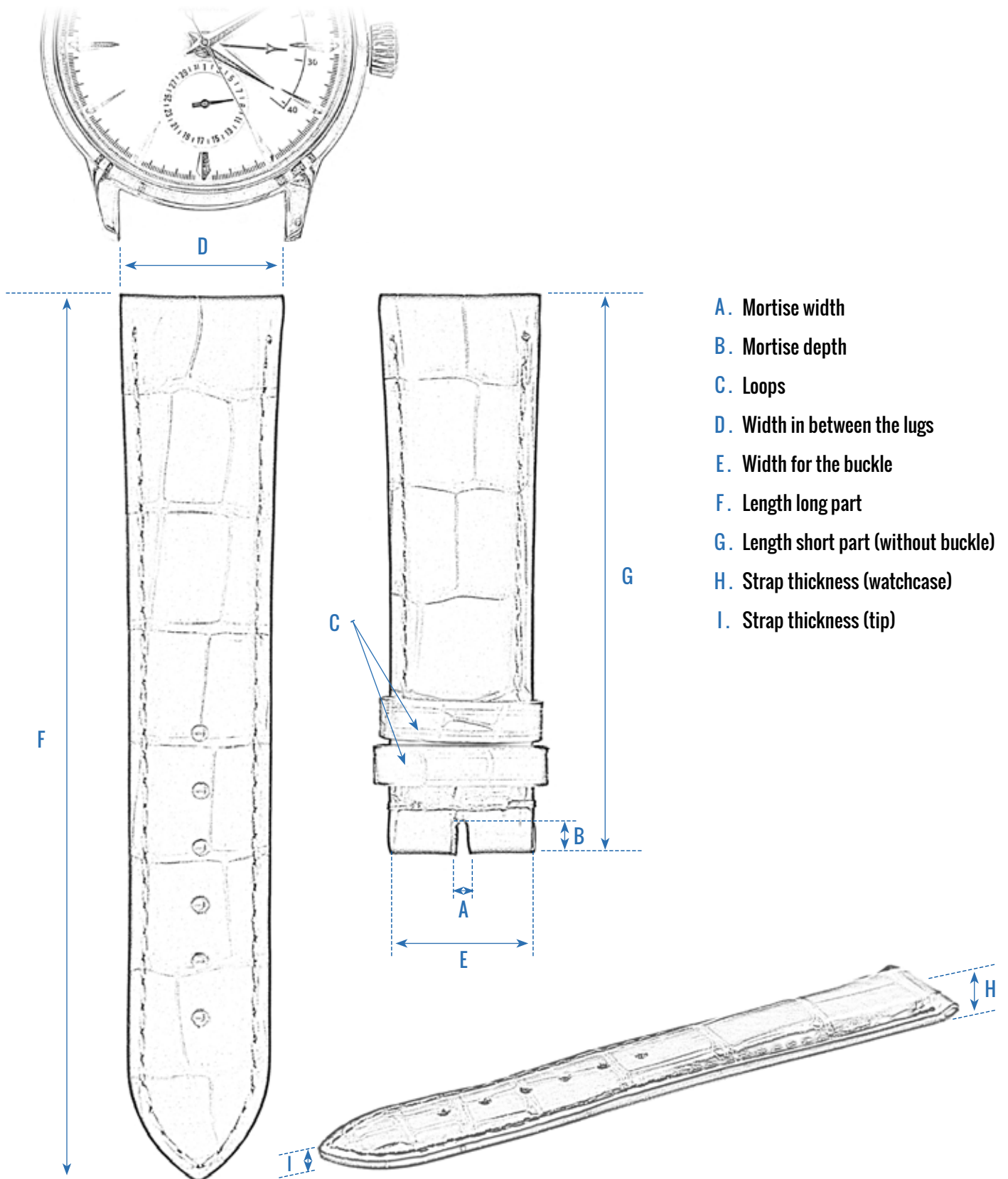
HOW TO MEASURE YOUR WATCH STRAP
PRENDRE LES MESURES DE SON BRACELET

時計ベルトの測り方



JEAN ROUSSEAU
Paris

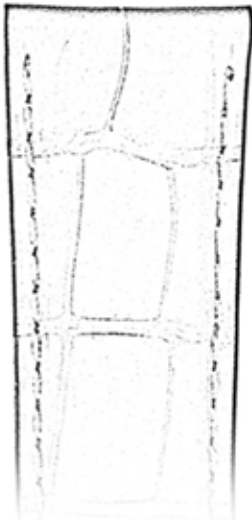
HOW TO MEASURE YOUR WATCH STRAP



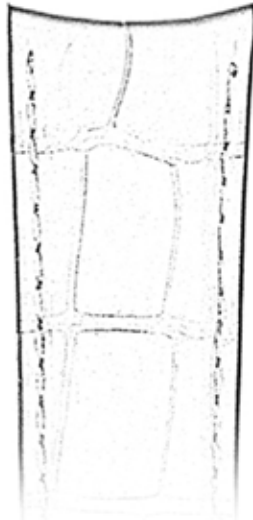
HOW TO MEASURE YOUR WATCH STRAP

LUGS

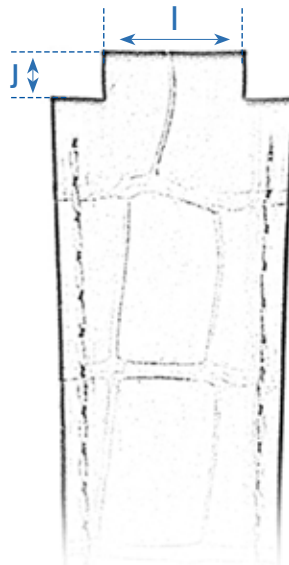
Straight



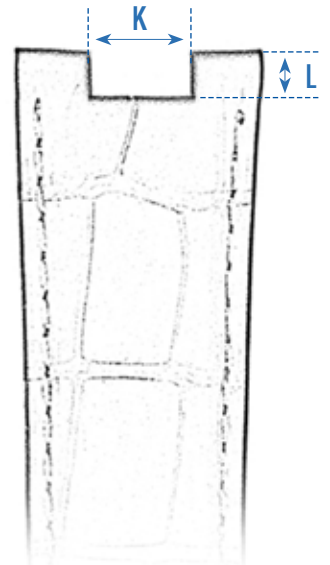
Curved



with Indent



Notched



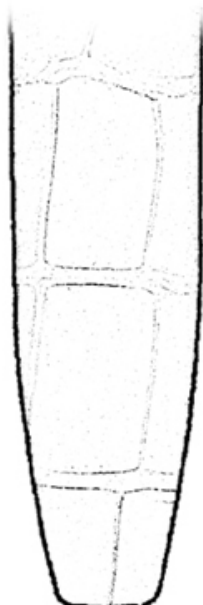
- I. Indent's width
- J. Indent's height

- K. Notch's width
- L. Notch's height

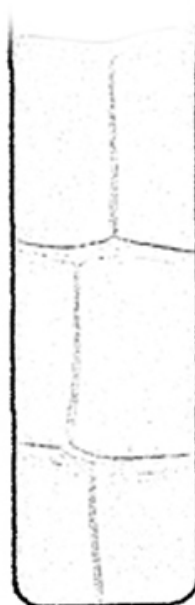
TIP



Ogive



JR



Square

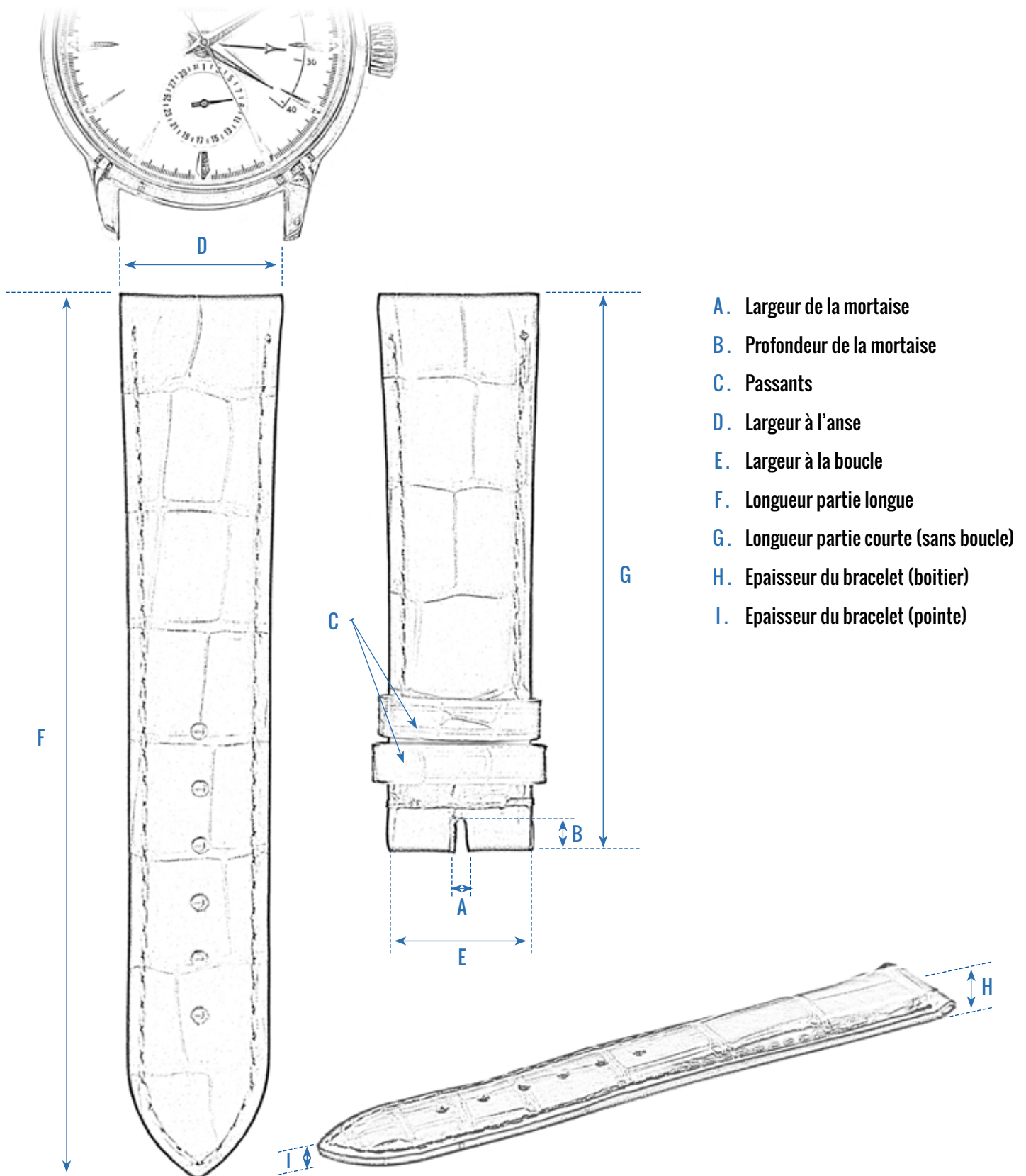


Round



JEAN ROUSSEAU
Paris

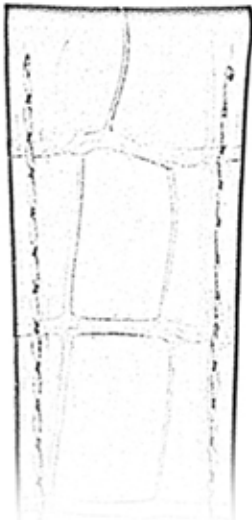
PRENDRE LES MESURES DE SON BRACELET



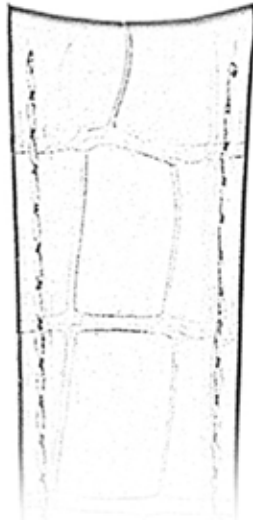
PRENDRE LES MESURES DE SON BRACELET

ANSES

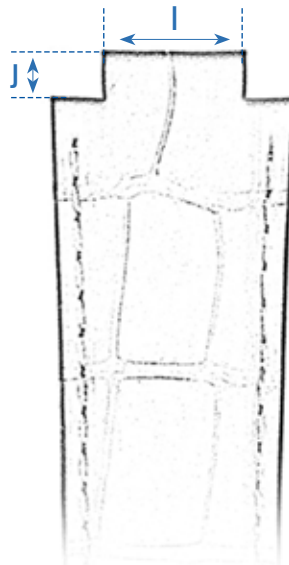
Droites



Courbées

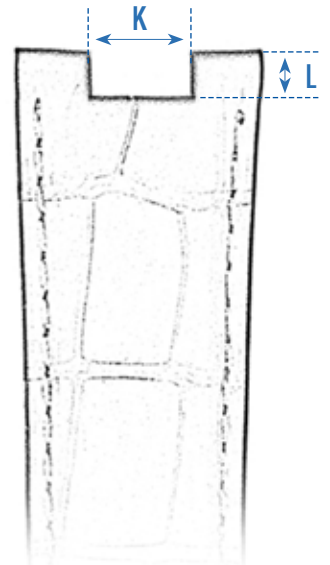


Avec décroché



- I. Largeur du décroché
- J. Hauteur du décroché

Avec encoches

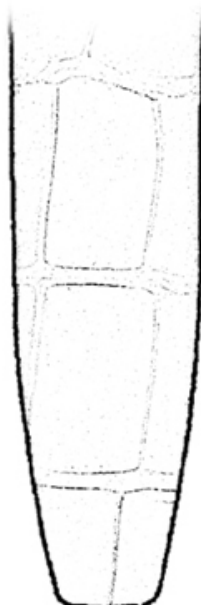


- K. Largeur de l'encoche
- L. Hauteur de l'encoche

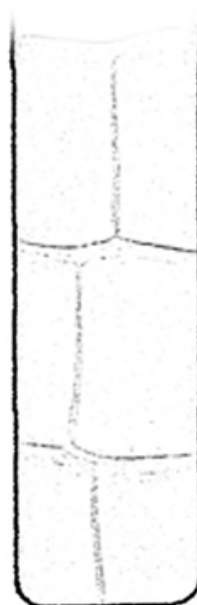
POINTE



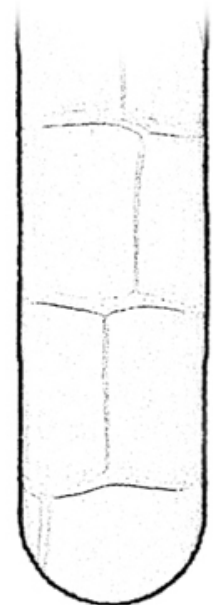
Ogive



JR



Carrée

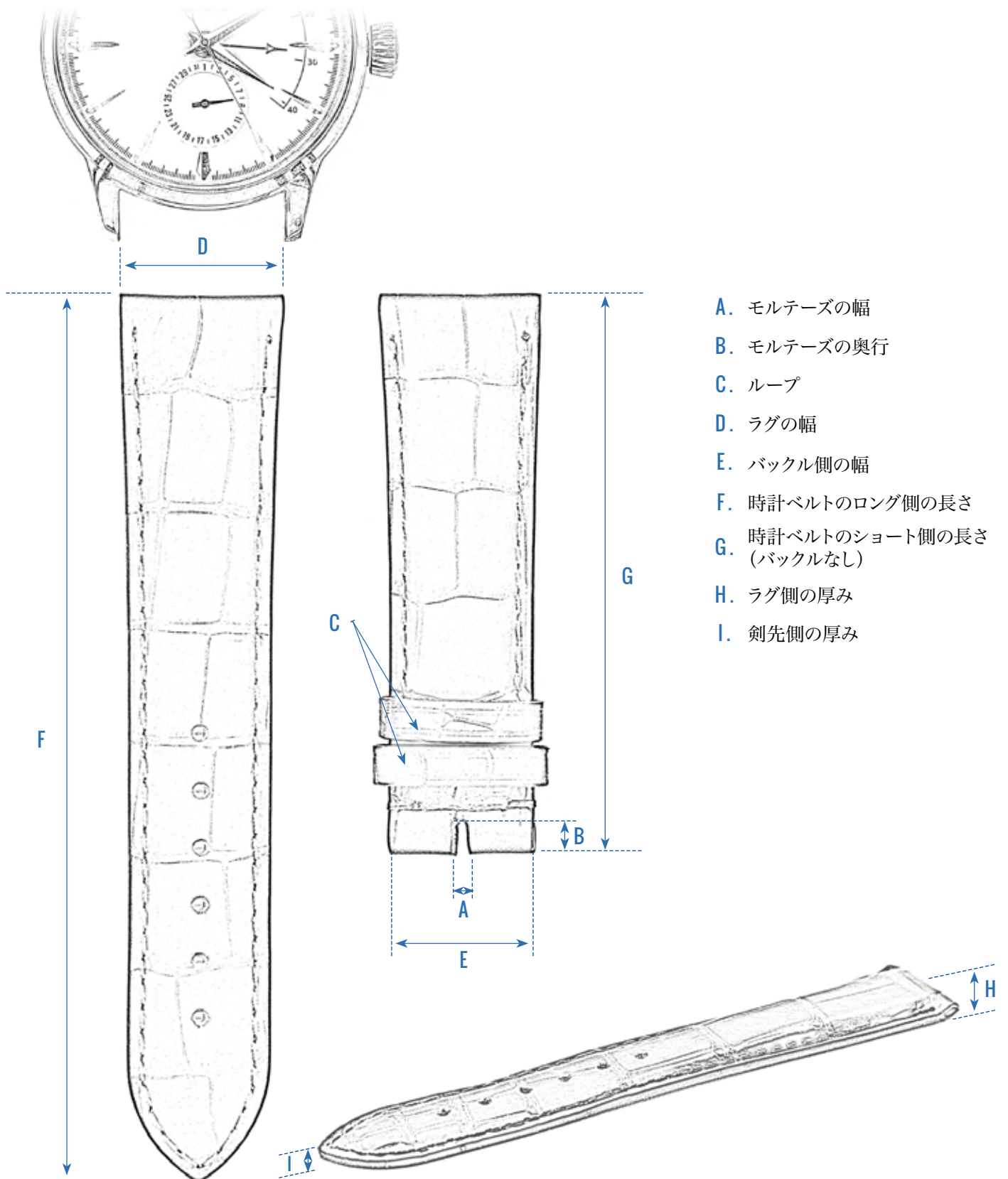


Ronde



JEAN ROUSSEAU
Paris

時計ベルトの測り方



- A. モルテーズの幅
- B. モルテーズの奥行
- C. ループ
- D. ラグの幅
- E. バックル側の幅
- F. 時計ベルトのロング側の長さ
- G. 時計ベルトのショート側の長さ
(バックルなし)
- H. ラグ側の厚み
- I. 剣先側の厚み

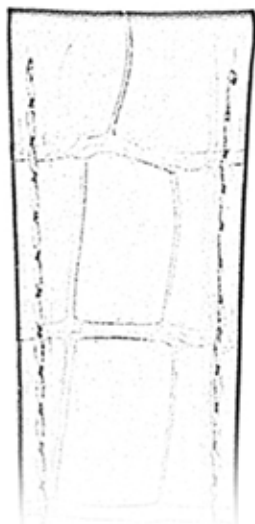


JEAN ROUSSEAU
Paris

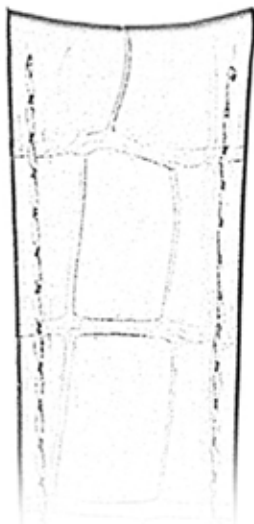
時計ベルトの測り方

ラグ

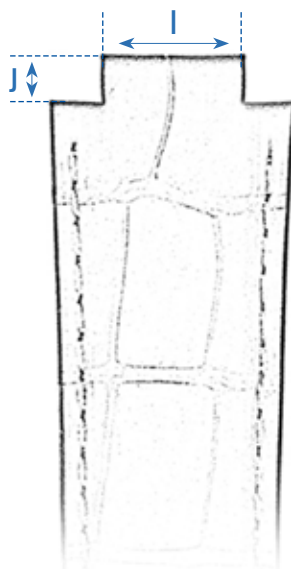
フラット



カーブ



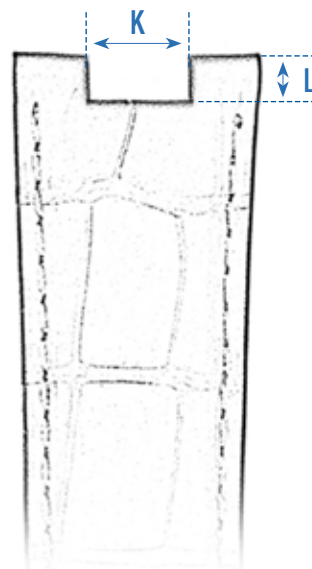
凸型



I. 中心幅

J. 縦

凹型



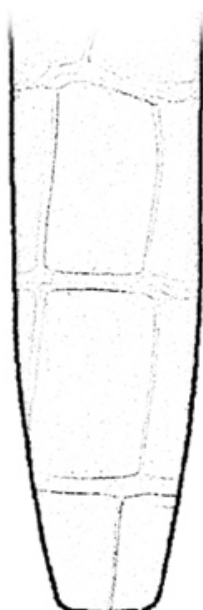
K. 中心幅

L. 縦

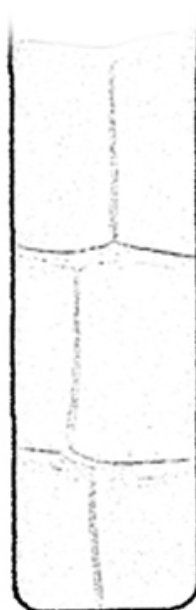
剣先タイプ



ボート



オメガ型



スクエア



ラウンド